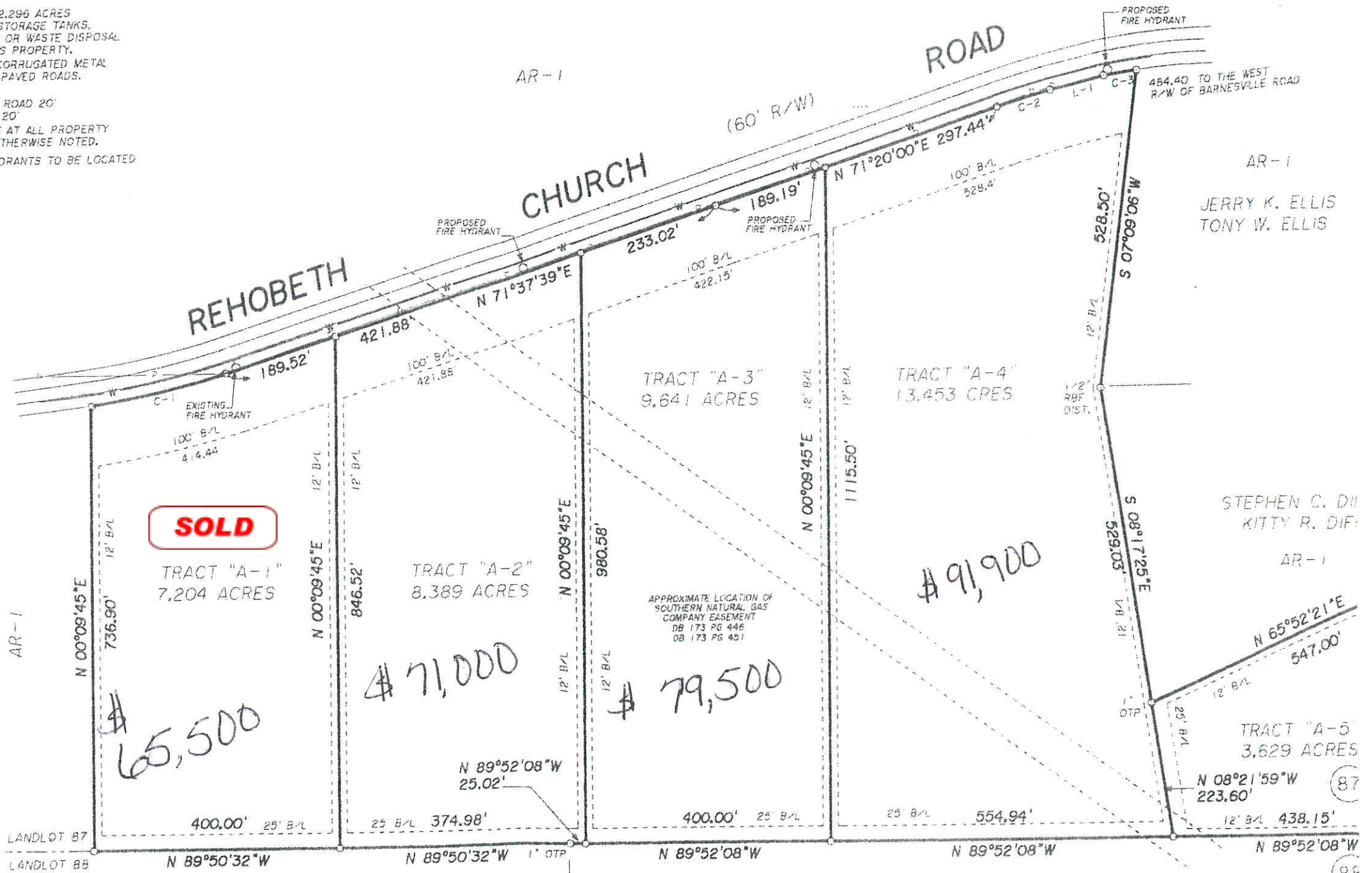


GENERAL NOTES:

- (1) PRESENT ZONING AR-1
- SETBACKS
FRONT 100'
SIDE 12'
REAR 25'
- (2) TOTAL SITE AREA 42.296 ACRES
- (3) NO UNDERGROUND STORAGE TANKS, HAZARDOUS MATERIALS, OR WASTE DISPOSAL AREAS LOCATED ON THIS PROPERTY.
- (4) 18" BEVELED END CORRUGATED METAL DRIVEWAY PIPE ON ALL PAVED ROADS.
- (5) ROAD WIDTHS
REHOBETH CHURCH ROAD 20'
BARNESVILLE ROAD 20'
- (6) 1/2" RE-BARS SET AT ALL PROPERTY CORNERS EXCEPT AS OTHERWISE NOTED.
- (7) PROPOSED FIRE HYDRANTS TO BE LOCATED 500' APART.



N/E
JERRY K. ELLIS &
TONY W. ELLIS

AR-1
JERRY K. ELLIS
TONY W. ELLIS

AR-1
STEPHEN C. DII
KITTY R. DIF

AR-1

PROPERTY
NEED
FIG
MUM
OR OTHER

THE RESULTS
TO BE
IN THE
TOP ARE
OF THE

IN
THAT THE
E BEEN
DIVISION
HAS BEEN
IN ITS

DING

NG
ALLED IN
CTORY
IS

87

88